

Vermeer®

Stump Cutter

SC 60 TX



Vermeer®

SC60TX

Bold Innovation, Solid Performance.

The Vermeer SC60TX demonstrates why the Vermeer name has become synonymous with stump-cutting innovation. Powered by a 60 hp (44.74 kW) CAT C2.2T turbocharged Tier 4a engine, this self-propelled stump cutter has a wide 51" (129.54 cm) stance for stability in the cutting mode and when needed, the SC60TX undercarriage retracts to a narrow 35" (88.90 cm) width to improve maneuverability in tight spaces.

The patented AutoSweep® system and geardrive system help to improve productivity and eliminate daily belt adjustment or alignment activity. The geardrive system efficiently transfers the engine horsepower directly to the area it is needed the most — the cutter wheel.

This stump cutter maneuvers easily, and rubber tracks provide traction to handle a variety of terrain and ground conditions, yet the 4.1 psi (.32 kg/cm²) ground pressure allows the machine to travel across delicate surfaces with minimal ground disturbance.



The 3-year/3000-hour extended limited warranty on gearboxes and drivelines offers you peace of mind, in addition to the 1-year/1000-hour Vermeer equipment limited warranty.



With its 60 hp (44.74 kW) diesel liquid-cooled engine, the SC60TX packs the power needed for bold performance.

The patent-pending Yellow Jacket™ Cutter System features a universal tooth that can accommodate all cutting positions on the cutter wheel. Plus it offers easy serviceability and extended tooth and pocket life.



Respected in the Industry.



Stump Cutter



An optional remote control allows operators to maneuver the stump cutter up to 100' (30.48 m) away from the unit. The joysticks and neckstrap help to increase operator control and comfort.



SC60TX Specifications

General

Length: 11.8' (3.60 m)
Width: 35" (88.90 cm) narrow mode,
51" (129.54 cm) wide mode
Height: 72" (182.88 cm)
Weight: 3500 lb (1587.57 kg)

Engine

Make and model: CAT C2.2T turbocharged Tier 4a
Horsepower: 60 hp (44.74 kW)
Type of fuel: Diesel
Fuel tank: 12 gal (45.43 L)

Cutter Wheel

Wheel diameter: 23" (58.42 cm) without teeth
Wheel thickness: 1.125" (2.86 cm)
Tooth style: Yellow Jacket Cutter System
Number of teeth: 30
Drive: Patented Vermeer gearbox direct-drive system

Cutting Dimensions

Above ground level: 27" (68.58 cm)
Below ground level: 16" (40.64 cm)
Straight line: 65" (165.10 cm)
Chip containment: 23 cu ft (.65 m³)

Ground Drive

Track type: Rubberized, steel-reinforced
Track width: 9" (22.86 cm)
Ground pressure (soft ground): 4.1 psi (.28 kg/cm²)
Ground pressure (hard surface): 12.6 psi (.87 kg/cm²)
Drive type: Integral motor and planetary unit
High-range travel speed: 110 fpm (33.54 m/min)
Low-range travel speed: 64 fpm (19.56 m/min)
Brakes: Spring-applied, hydraulically released



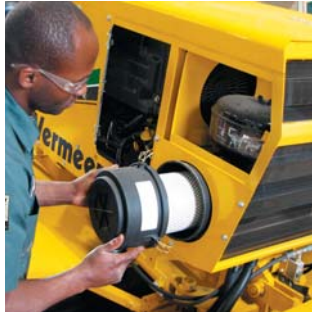
Zero turning radius. The planetary traction drive helps provide increased traction while the counter rotating tracks provide tight maneuvering in difficult jobsite conditions.



The Vermeer dealer network: Reliable support, all over the world.



With nearly 200 locations across the globe - you're never far from an independent, authorized Vermeer dealer. Our dealers are in place to support your success with product expertise that's second to none.



When you need service, you can count on your local Vermeer dealer. With multiple locations, remote service trucks, and factory-offered technician training, your local Vermeer dealer offers reliable service that keeps your equipment running.



Vermeer parts are designed and manufactured to original specifications, or whether they're new parts or replacement parts, they'll live up to the Vermeer name.



Vermeer EMEA
(Europe, Middle East, Africa and CIS)
P.O. Box 323
4460 AS Goes
the Netherlands
Phone: +31 113 272700
Fax: +31 113 272727

Vermeer Corporation
1210 Vermeer Road East
P.O. Box 200
Pella, Iowa 50219 U.S.A.
Phone: (641) 628-3141
Fax: (641) 621-7773
International fax: +1 (641) 621-7730
www.vermeer.com

Vermeer Asia Pacific
48 Toh Guan Road East
#01-105 Enterprise Hub
Singapore 608586
Phone: +65 6516 9560
Fax: +65 6515 9218

Call toll-free 1-888-VERMEER
1-888-837-6337 (USA only)

Building Industry Alliances to Serve You Better.

Vermeer has forged strong strategic alliances with tree industry giants that include Sherrill Incorporated and ArborMaster Training. These alliances ensure that top-quality industry support is the standard at Vermeer dealerships. Membership with the NAA and ISA helps Vermeer stay in touch with the customers it serves and the issues they face.



Equipment shown is for illustrative purposes only and may display optional accessories or components. Please contact your local Vermeer dealer for more information about machine specifications. Vermeer Corporation reserves the right to make changes in engineering, design and specifications; add improvements; or discontinue manufacturing at any time without notice or obligation. VERMEER, VERMEER LOGO, YELLOW JACKET, and AUTOSWEEP are trademarks of Vermeer Manufacturing Company in the U.S. and/or other countries. CAT is a trademark of Caterpillar, Inc. SHERRILL is a trademark of Sherrill Incorporated. Copyright © 2009 Vermeer Corporation. All Rights Reserved.