

# Vermeer®

Stump Cutter

# SC852



# Vermeer®

# SC852

## Put the Moves On

Stump cutters tend to be known for their power, but not so much for their agility. The Vermeer SC852 rubber-tire stump cutter has been designed to offer both. This sleek model can fit through a 36" (91.4 cm) gate, but still provides 85 (63.4 kW) horses of pure power to make short work of any stump in its path.

The SC852 moves easily through your jobsite with a top speed of 150 fpm (45.7 m / min), then uses creep control to ease into the right position for cutting. On top of that, it boasts a full 9" (22.9 cm) of ground clearance, so uneven terrain doesn't have to slow you down.

For tight conditions in both residential and off-road applications, the SC852 with standard all-wheel drive moves in and out easily — to get the job done.

## Raw Stump-Cutting Power in a Sleek New Package



**High cutter wheel** moves away from the machine as the boom drops, increasing the maximum cutting width. The SC852 gives you a cutting height of 31" (78.7 cm) above ground and 25" (63.5 cm) below — the deepest cut in its class.



**Front-mounted controls** offer maneuverability in confined spaces by allowing the operator to walk in-line with the machine.

# Stump Cutter

**Ground clearance** allows plenty of room for chip containment, while the rounded chip blade moves chips around the jobsite easily, reducing the need for manual chip moving. A wide wheel base provides stability; a differential lock on the 4WD system can be disengaged for tight turning.



**Yellow Jacket™ cutter system** provides easy serviceability and extended pocket and tooth life.



**Direct drive hydrostatic pump and gearbox** eliminates clutch and belt-drive maintenance. Cutter wheel stopping time is reduced with no-maintenance hydrostatic braking.

## SC852 Specifications

### General

Weight: 4100 lb (1859.7 kg)  
Length (with cutter guard): 12.3' (3.7 m)  
Width (with dual tires): 56" (142.2 cm)  
Width (without dual tires): 35" (88.9 cm)  
Height: 76.5" (194.3 cm)  
Outside turning diameter: 18' (5.5 m)

### Engine

Make and model: Cummins B3.3TAA  
Gross horsepower: 85 hp (63.4 kW)  
Maximum torque: 224 ft-lb (303.7 Nm) @ 1600 rpm  
Electrical system: 12 volt  
Fuel-tank capacity: 13.5 gal (51.2 L)

### Hydraulic System

Oil-tank capacity: 14 gal (53 L)  
Oil type: Vermeer HyPower 68  
Oil cooler: Standard

### Cutter Wheel Drive Train

Wheel diameter: 23" (58.4 cm) without teeth  
Wheel thickness: 1.13" (2.9 cm)  
Drive: Hydrostatic direct drive gearbox  
Tooth style: Yellow Jacket Cutter System  
Number of teeth: 26

### Cutting Dimensions

Above ground level: 31" (78.7 cm)  
Below ground level: 25" (63.5 cm)  
Straight line: 72" (182.9 cm)



**The 3-year / 3000-hour extended limited warranty** on select stump cutter gearboxes and driveline offers you peace of mind, in addition to the 1-year / 1000-hour Vermeer equipment limited warranty.

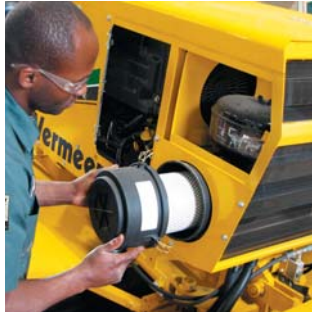


**Easy access to daily service points.** Other maintenance areas can be reached easily through hinged doors and removable panels.

# The Vermeer dealer network: Reliable support, all over the world.



*With nearly 200 locations across the globe - you're never far from an independent, authorized Vermeer dealer. Our dealers are in place to support your success with product expertise that's second to none.*



*When you need service, you can count on your local Vermeer dealer. With multiple locations, remote service trucks, and factory-offered technician training, your local Vermeer dealer offers reliable service that keeps your equipment running.*



*Vermeer parts are designed and manufactured to original specifications, so whether they're new parts or replacement parts, they'll live up to the Vermeer name.*



**Vermeer EMEA**  
(Europe, Middle East, Africa and CIS)  
P.O. Box 323  
4460 AS Goes  
the Netherlands  
Phone: +31 113 272700  
Fax: +31 113 272727

**Vermeer Corporation**  
1210 Vermeer Road East  
P.O. Box 200  
Pella, Iowa 50219 U.S.A.  
Phone: (641) 628-3141  
Fax: (641) 621-7773  
International fax: +1 (641) 621-7730  
www.vermeer.com

**Vermeer Asia Pacific**  
48 Toh Guan Road East  
#01-105 Enterprise Hub  
Singapore 608586  
Phone: +65 6516 9560  
Fax: +65 6515 9218

**Call toll-free 1-888-VERMEER**  
1-888-837-6337 (USA only)

## Building Industry Alliances to Serve You Better.

*Vermeer has forged strong strategic alliances with tree-industry giants that include Sherrill Incorporated and ArborMaster Training. These alliances ensure that top-quality industry support is the standard at Vermeer dealerships. Membership with the NAA and ISA helps Vermeer stay in touch with the customers it serves and the issues they face.*



Equipment shown is for illustrative purposes only and may display optional accessories or components. Please contact your local Vermeer dealer for more information about machine specifications. Vermeer Corporation reserves the right to make changes in engineering, design and specifications; add improvements; or discontinue manufacturing at any time without notice or obligation. Vermeer, the Vermeer logo, and Yellow Jacket are trademarks of Vermeer Manufacturing Company in the U.S. and / or other countries. Cummins is a trademark of Cummins Engine Company. Sherrill Tree is a trademark of Sherrill Incorporated. ArborMaster is a registered trademark of AMT.  
© 2009 Vermeer Corporation. All Rights Reserved.