

Vermeer®

Brush Chipper

BC-1200XL



One proven name.

When there's tough brush-clearing work to do, you can count on the Vermeer BC1200XL to handle it. Available with either an 85-hp (63.4 kW) or 110-hp (82 kW) Cummins Tier 3 diesel engine, the BC1200XL is rugged, powerful, and offers innovative features designed for safety and performance.

Not only does the BC1200XL tear through material up to 12" (30.5 cm) in diameter, its patented productivity enhancements help make the job easier for you. Our exclusive SmartFeed system automatically monitors engine speed and stops or reverses the feed rollers if needed, reducing strain on the engine. The dual-pump hydraulic system helps deliver an impressive 3600 lb (1632.9 kg) of theoretical pull-in force for the heavy work. The operator controls are conveniently located close to the infeed area, helping you monitor the machine while it works.

The BC1200XL includes a number of exclusive safety features. The strategically located Bottom Feed Stop Bar makes it possible for an operator's leg to either intentionally or automatically strike the bar and shut off the feed mechanism in an emergency. The optional winch features a new patent-pending winch line interlock, which requires the end of the winch line to be attached to an interlock hook in order for the feed rollers to be operable.

In the world of quality, dependable tree care equipment, Vermeer stands tall.



Dual horizontal offset feed rollers improve performance by aggressively grabbing and feeding material to the drum. The offset helps the upper feed roller climb over big logs or material with lots of branches or forks.



Easily lifts heavy material. An optional winch allows operators to move large logs effortlessly. The 150' (45.7 m) winch line can handle logs up to 2000 lb (907 kg) and can be used to lift the log onto the feed table.



Engine options to fit your needs. With two Cummins diesel engine options providing 85 hp (63.4 kW) or 110 hp (82 kW), contractors have the ability to choose an appropriate horsepower option based on their jobsite. A steel engine enclosure helps provide additional durability.





BC1200XL Specifications

General

Weight (with winch): 5600 lb (2540.1 kg)
Weight (without winch): 5325 lb (2415.4 kg)
Transport length: 14' (4.3 cm)
Width: 79" (200.7 cm)
Height: 103" (261.6 cm)

Engine Options

Make/Model: Cummins QSB3.3 Turbo Tier 3
Horsepower: 110 hp (82 kW)
Max torque: 304 ft-lb (412.2 Nm) @1600 rpm
Fuel type: Diesel
Number of cylinders: 4
Cooling medium: Liquid

Make/Model: Cummins B3.3TAA Turbo Tier 3
Horsepower: 85 hp (63.4 kW)
Max torque: 215 ft-lb (303.7 Nm) @1600 rpm
Fuel type: Diesel
Number of cylinders: 4
Cooling medium: Liquid

Capacities

Fuel tank: 25 gal (94.6 L)
Hydraulic tank: 12 gal (45.4 L)

Cutting System

Drum size: 20" dia. X 20" (50.8 cm dia. x 50.8 cm) wide
Speed: 2000 rpm
Knives: Two A8 chipper steel
Shear bar: Four useable edges

Feed/Discharge System


Infeed throat/feed capacity: 13" x 17" (33 cm x 43.2 cm)
Infeed opening: 52" x 32" (132.1 cm x 81.3 cm)
Feed table length: 30.1" (76.5 cm)
Feed table height: 32" (81.3 cm)
Feed roller style: Dual horizontal offset
Infeed rate: 0 fpm – 122 fpm (0 m/min – 37.2 m/min)

Chassis

Frame: 7" x .25" (17.8 cm x .6 cm) Z-channel
Tires (option 1): ST235/80/R16 Load Range E
Tires (option 2): ST285/75/R16 Load Range E
Axle/suspension: 7000 lb (3175.2 kg) rubber torsion
Electric brakes with breakaway switch

Electrical

System voltage: 12 V
Lights: Brake, turn, tail, license, side indicators



A clutchless PTO system reduces premature wear to the belt-drive system by preventing high-speed engagement of the cutter drum. The throttle is integrated with the belt drive to help ensure the PTO can be engaged only while the engine is at low speed.

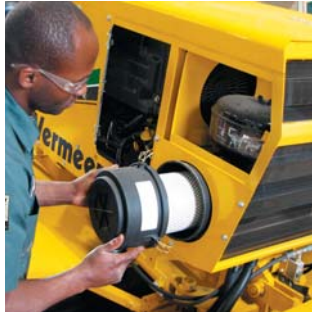


The 3-year / 3,000-hour extended limited warranty on drum housings, cutter drums, shaft, and ring feeder hubs offers you peace of mind, in addition to the 1-year / 1,000-hour Vermeer equipment limited warranty.

The Vermeer dealer network: Reliable support, all over the world.



With nearly 200 locations across the globe - you're never far from an independent, authorized Vermeer dealer. Our dealers are in place to support your success with product expertise that's second to none.



When you need service, you can count on your local Vermeer dealer. With multiple locations, remote service trucks, and factory-offered technician training, your local Vermeer dealer offers reliable service that keeps your equipment running.



Vermeer parts are designed and manufactured to original specifications, so whether they're new parts or replacement parts, they'll live up to the Vermeer name.



Vermeer EMEA
(Europe, Middle East, Africa and CIS)
P.O. Box 323
4460 AS Goes
the Netherlands
Phone: +31 113 272700
Fax: +31 113 272727

Vermeer Corporation
1210 Vermeer Road East
P.O. Box 200
Pella, Iowa 50219 U.S.A.
Phone: (641) 628-3141
Fax: (641) 621-7773
International fax: +1 (641) 621-7730
www.vermeer.com

Vermeer Asia Pacific
48 Toh Guan Road East
#01-105 Enterprise Hub
Singapore 608586
Phone: +65 6516 9560
Fax: +65 6515 9218

Call toll-free 1-888-VERMEER
1-888-837-6337 (USA only)

Building Industry Alliances to Serve You Better.

Vermeer has forged strong strategic alliances with tree-industry giants that include Sherrill Incorporated and ArborMaster Training. These alliances ensure that top-quality industry support is the standard at Vermeer dealerships. Membership with the NAA and ISA helps Vermeer stay in touch with the customers it serves and the issues they face.



Equipment shown is for illustrative purposes only and may display optional accessories or components. Please contact your local Vermeer dealer for more information on machine specifications. Vermeer Corporation reserves the right to make changes in engineering, design and specifications; add improvements; or discontinue manufacturing at any time without notice or obligation. Vermeer and Vermeer logo are trademarks of Vermeer Corporation in the U.S. and/or other countries.

CAT is a trademark of Caterpillar, Inc. ArborMaster Training is a trademark of ArborMaster. Sherrill is a trademark of Sherrill Incorporated.
© 2009 Vermeer Corporation. All Rights Reserved.